



FlexoKing FT-40 for batch dispensing as well as "in-can" tinting. Explosion proof executed for Zone II.



Dispensing system with linear type dispensing head.




Dispensing directly out of drums.

FlexoKing FT-Model

Flexible tank gravimetric dispensing installation for dispensing out of drums, IBC-containers and/or from fixed tanks.

Typical features:

- ✎ Standard suitable for dispensing up to 40 base materials and/or colorants.
- ✎ Dispensing head easy expandable.
- ✎ Suitable for batch dispensing as well as "in-can" tinting.
- ✎ Automatic valve head cleaning device.
- ✎ Floor weighing scale and/or weighing scale integrated in a (height adjustable) roll conveyor or swing arm construction.
- ✎ Special dispensing head construction makes it possible to dispense in containers with a small diameter.
- ✎ Integrated in an existing tank park and/or in combination with a drum storage system for e.g. 200 ltr. drums/barrels that have to be exchanged when empty.

FlexoKing  **FT**

FlexoKing FT-Model STANDARD AND OPTIONAL SET-UP



Project with 2 linear type dispensing heads for simultaneous dispensing.

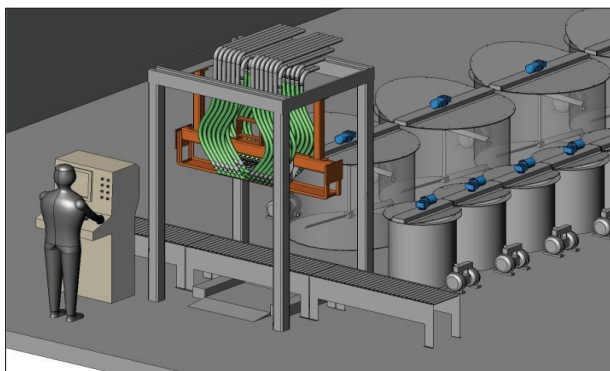
STANDARD SET-UP

Dispensing system with weighing scale integrated in roll conveyor or swing-arm construction. Dispensing system non-explosion proof.

OPTIONAL SET-UP

Due to the modular design, the installation can be extended with several options:

- ✎ Explosion proof in accordance with ATEX.
- ✎ Interface with all (common) color computer systems and/or host networks.
- ✎ Floor weighing scale for batch dispensing.
- ✎ Connection to a (existing) tank park.
- ✎ Drum storage system consisting of:
 - Lids with suction pipes, recirculation connections and vents.
 - Frame for pumps.
 - Pumps with pulsation dampeners.
 - Agitators (electric or pneumatic operated).
 - Chemical resistant hoses.
 - Feed- and/or discharge roll conveyor.



Linear dispensing head with roll conveyor system and fixed stainless steel tanks for colorant and base material storage.



Linear dispensing head with scale integrated in roll conveyor system. Roller track can be pushed backwards for batch dispensing.

Technical specifications:

Dimensions dispensing system	: Depending on the final configuration.
Materials of construction	: All wetted parts made of stainless steel and PTFE. Frame in coated mild steel.
Method of dispensing	: Gravimetric.
Dispensing weight and accuracy	: Depending on the type of scale.
Dispensing valves	: Standard up to 40 dispensing valves. Expandable upon request.
Dispensing capacity	: Depending on the final execution and product viscosity.
Operation	: PC operated (Windows based).

All capacities as listed in this brochure are indications and are subject to product properties.

GEMINI Techniek B.V.
Metaalstraat 22
7483 PD Haaksbergen
The Netherlands

Tel. : +31 (0)53 428 3000
Fax : +31 (0)53 428 3409
Web : www.colordispensing.com
Email : info@gemini-techniek.com

We do not undertake any liability for the results of usage of these products.
The technical data set forth in this brochure reflect our best knowledge at the time of issue.
The brochure is subject to changes pursuant to new developments and findings, and a similar reservation applies to the properties of the products described.