

AutoFlow™ CF

Continuous flow sterilization of simple biowaste streams.

Designed specifically for biologics, virology, vaccine, GMO and CMO pilot plant research labs through large-scale manufacturing facilities. Capable of efficiently sterilizing large volumes of liquid process waste.

Continuous flow design allows for ongoing treatment of liquid from different sources (sinks, washers, sterilization units, process waters) from single-suite pilot plant labs to large, multi-user facilities.

PRODUCT TREATED

Laboratory / Pilot Plant Biowaste Effluent for Biosafety Classifications up to BSL-3+

SYSTEM OVERVIEW

- Biologically Validatable: includes design features to allow routine validation
- Fully automated, Continuous Flow EDS technology
- Effluent sterilization with adjustable Treatment Temperature up to 140°C (285°F)
- Fully automated operation: AutoFlow™ technology
- Designed for the safety of laboratory staff - no operator contact with hazardous liquid during operation
- PLC-controlled treatment and cleaning cycles
- Modular, compact design, assembled and tested
- Compliant with European, American and other international standards
- Simple utility connections allow for unit mobility
- Power and control cabinet (including PLC and touchscreen)
- Constructed out of materials and components that are safe for lab maintenance cleaning solutions
- Simplistic design for reduced maintenance
- Leak detection system: alarms and visual controls
- Automatic stop of the waste discharge in case of energy failure
- Recording and trending of operational data
- Low energy consumption - environmentally friendly system



TECHNICAL SUMMARY

Biosafety Class:	BSL-2, BSL-3, BSL-3+
Flow Rate (Hourly):	from 500 to 6000 L +
Compressed Air:	6-7 bar (85-100 psi)
Controls:	PLC, color touchscreen HMI Data logging of cycles



sanitary piping

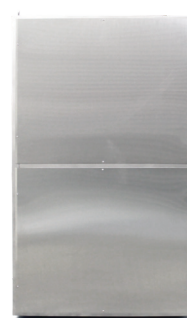
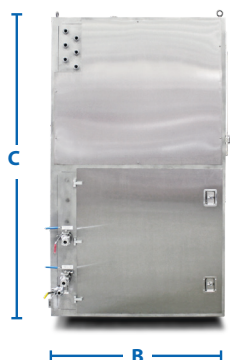
AutoFlowTM CF

Continuous flow sterilization of simple biowaste streams.

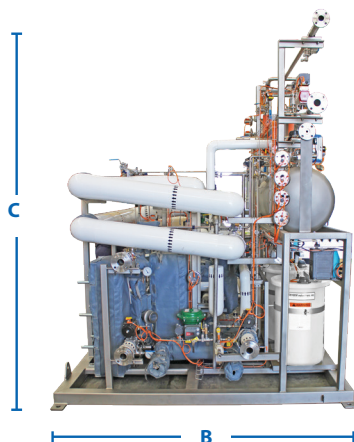
MODEL	MAX HOURLY CAPACITY	A (Width)	B (Depth)	C (Height)	HEAT SOURCE	SHIP WEIGHT
AFc-500	500 L (132 Gal)	1981 mm (78 in)	1295 mm (51 in)	2070 mm (81.5 in)	Steam/Electric	1135 kg (2500 lbs)
AFc-1000	1000 L (264 Gal)	1981 mm (78 in)	1295 mm (51 in)	2070 mm (81.5 in)	Steam/Electric	1135 kg (2500 lbs)
AFc-3000	3000 L (1057 Gal)	3860 mm (152 in)	2440 mm (96 in)	3050 mm (120 in)	Steam	2090 kg (4600 lbs)
AFc-6000	6000 L (1585 Gal)	3860 mm (152 in)	2440 mm (96 in)	3050 mm (120 in)	Steam	2180 kg (4800 lbs)
Custom Models Are Available to Meet Client Requirements						

Capacities are approximate and may vary depending upon options and features requested.
Dimensions and weights are approximate for shipping - does not include crating.

Enclosed Cabinet:



Open Skid:
(preferred for sizes AFc-3000 and higher)



Biowaste Sterilization | Solvent Wash & Recovery | Custom Process Skids | Service

700 Industrial Drive, Dupon IL 62239, (618) 286-5000, www.prisystems.com

AutoFlow-CF-Spec-20191226