

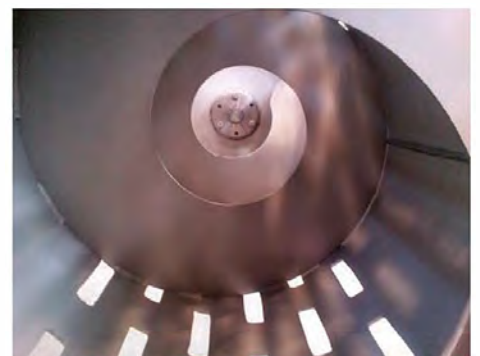


Statement of Qualifications



Solvent Wash & Recovery | Biowaste Sterilization | Custom Process Skids | Service

700 Industrial Drive, Dupu IL 62239, (618) 286-5000, www.prisystems.com





Company Profile

Progressive Recovery, Inc.

Progressive Recovery, Inc., strives to be a global leader in the design and manufacture of specialized, custom designed equipment for the processing of hazardous materials, liquid waste streams and bio-containment systems. Through development of innovative clean technologies, PRI is committed to serving industry and government in the search to develop safe, efficient and economical solutions to reduce or eliminate hazardous waste. The Company aims to make its clients more competitive, more compliant, more profitable, and more environmentally friendly.

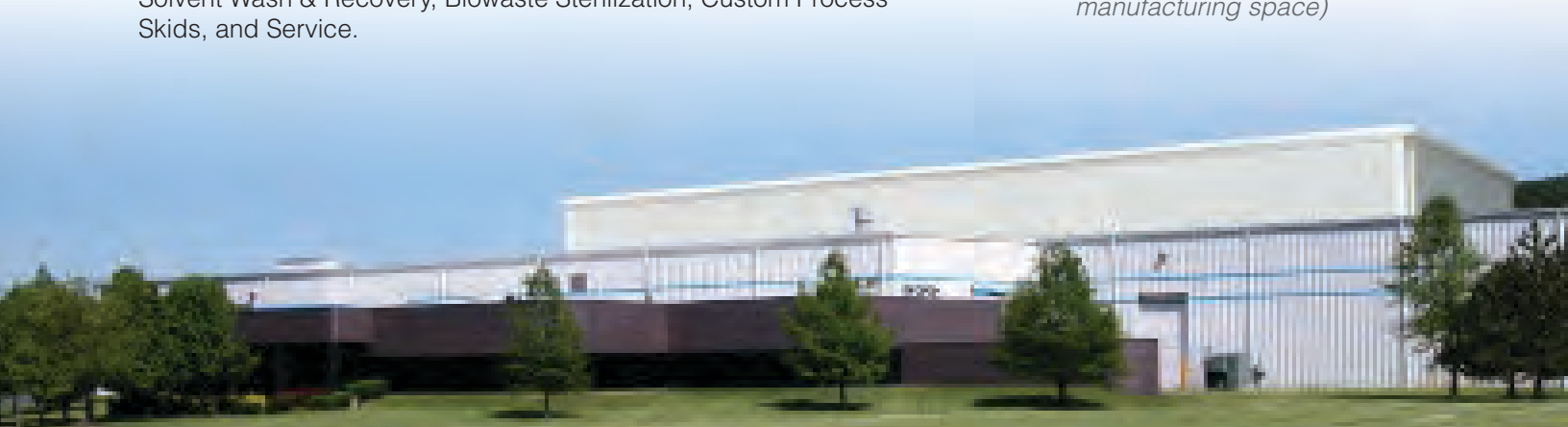
Founded in 1983, Progressive Recovery is a well-established, well-capitalized and profitable, employee-owned 'C' corporation. PRI provides industry with innovative, customized designs and specialized solutions for managing hazardous material, liquid and solid waste processing equipment, and has more than **3,300** systems installed in over **39** countries worldwide.

PRI is a leader in fluid processing, modular equipment design, and bio-containment systems. Its systems are custom designed to meet the specific needs of the client, each solution incorporating the Company's core design criteria of reducing chemistry costs, reducing manpower requirements, and reducing environmental impact.

The Company principally operates in four business segments Solvent Wash & Recovery, Biowaste Sterilization, Custom Process Skids, and Service.



*2009 Facility Expansion
(now over 60,000 sq. ft. total
manufacturing space)*



Approach & Philosophy

Progressive Recovery, Inc.

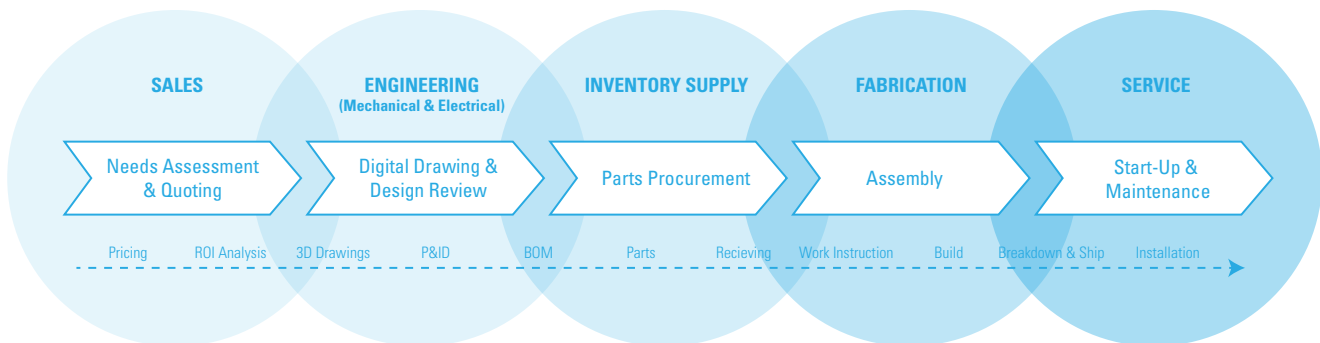
Our philosophy has always been to provide solutions to client's needs that yield client's a positive return on investment in terms of reliability and performance.

- We design and build systems to the highest standards to deliver reliable performance in difficult environments.
- We want the results of the project to meet or exceed the expectations of the client, making us the vendor of choice for future projects.

As a full service vendor, PRI has the ability to manage a project from the initial identification of a need to the commissioning and continued support of the equipment. The process begins with a thorough evaluation of the situation, the needs, and the desired results.

Discussions with our engineering staff will result in the creation of a conceptual solution. To validate this concept we may use computer simulation of the process, testing in our laboratory, and/or additional engineering design work. Further testing may be done after the completion of engineering to again validate the concept of the equipment and the methodology that will be used for the full scale system.

Detail design and fabrication of the system takes place with our in-house engineering team closely supervising and monitoring the progress. Our engineers and field service staff work closely with the client during the installation and commissioning of the equipment.



Capabilities

Expertise

- **Pressure Vessels:** custom vessels with ASME, SELO, UL, CUL, PED and other international certifications for industrial applications.
- **Heat Transfer Systems:** steam, thermal fluid and electric systems for process heating and cooling applications.
- **Process Control:** integrated process controls for complete automation of complex process systems.
- **Distillation Systems:** to process and recover waste solvents, oils, biofuels, and other chemicals, and reduce waste.
- **Automated Solvent Wash Systems:** to provide automated cleaning of converting press parts.
- **Biowaste Sterilization:** liquid and solids waste destruction and sterilization for high containment research laboratories.
- **Oil & Gas Separation:** membrane and mole sieve separation and purification systems to meet our client's exacting specifications.
- **Modular Process Systems:** integrated, automated modular process systems for a wide variety of process applications.
- **Contract Manufacturing:** PRI offers engineering review and completion as well as comprehensive manufacturing capabilities to produce fully integrated process systems of our client's design.
- **Materials of Construction:** Aluminum, Bronze, Copper, Mild/ Carbon Steels; Stainless Steels, Duplex / Super Duplex including 2205, 2507, AL6XN, 254SMO, Hastelloy, Inconel and more.

Disciplines

- | | |
|-------------------------------|-------------------------------|
| • Mechanical Engineering | • Certified Welders |
| • Electrical Engineering | • Structural Fabrication |
| • Control Systems Integration | • B31.3 Process Piping |
| • Structural Engineering | • ASME Section VIII Vessels |
| • Process Engineering | • UL / CUL Panel Shop |
| • Chemical Engineering | • Insulating |
| • Design Team | • Machining, Rolling, Bending |
| • Project Management | • Sandblasting & Painting |
| | • Safety Programs & Protocols |



Solvent Wash & Recovery Systems

Product Divisions

PRI is the leader in the design and manufacture of Resource Recovery distillation and separation systems for the Paint & Coatings, Consumer Package Printing Industries and General Manufacturing where flammable and combustible solvents are used. Our core technology is in a broad range of solvent recovery and solvent recycling systems, custom-made to meet specific application requirements. Vacuum modules, supply and receiver support tanks, closed loop process automation systems, enhanced safety packages and options to improve operator interface are just a few of the common additions.



Distillation Systems

Distillation Systems:

PRI offers both scrape-sided and non-scraped distillation systems, for operations generating solvent-laden process waste. The units offer the highest BTU rating in the industry, and can operate in either batch or continuous modes. All models are constructed for Class I, Division 1, Group D environments. Each system complies with NFPA and NEC codes applicable to the vessel and installation.



Automated Solvent Wash Systems

Automated Solvent Wash Systems:

PRI Solvent Wash Systems (SWS) are enclosed wash systems designed primarily for press parts cleaning in the packaging printing industry. Our SWS are often incorporated into complete turn-key solvent recovery and recycling systems, feeding into one of our distillation units in a closed-loop system. Systems are automated and designed to maximize production and minimize the need of operator oversight.

Photopolymer Flexographic Washout Systems:

The PlateVac™ line is a series of fully enclosed and self-contained distillation systems, designed for closed loop interface and direct support of photopolymer plate processor. PlateVac™ is designed and rated specifically for a Class 1, Division 2 enclosed environment and include spent solvent feed tank, distillation unit and clean solvent supply tanks inside a swept cabinet enclosure. It includes a patented Surrogate Solution Replacement (SSR) technology which replaces valuable solvent in the distillation vessel with a lower cost replacement high boiling liquid, making the system more efficient and economical.



PlateVac™ Flexo Wash

Biwaste Sterilization

Product Divisions

PRI-Bio is the global leader in biowaste treatment systems for environmental waste at biological containment facilities worldwide. Since 1999, PRI-Bio has provided safe, cost-effective solutions to research laboratories, including the most advanced High Containment BSL3, BSL3-AG, BSL3 Enhanced, and BSL4 facilities, thermally treating liquid waste streams and solid biowaste created from drains, sinks, showers, autoclave, necropsy and other waste water discharge.

Tissue Digester Systems:

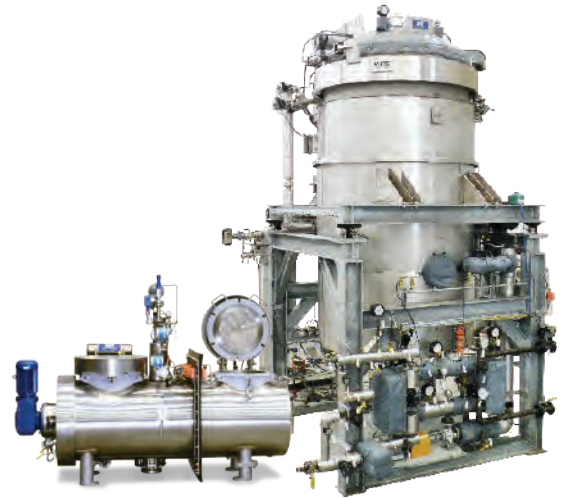
PRI-Bio's patented third generation Thermal Tissue Digester™ (TTD) represents a revolutionary advancement in carcass disposal, by using agitation and heat to break down tissue with alkali, minimizing water and caustic in the process. Available in both a vertical or a horizontal configuration, the TTD offers the lowest total overall cost for carcass disposal, lowest water and caustic consumption, and lowest operating expense over alternative systems and over incineration. The TTD offers the smallest footprint for efficient lab space use, while eliminating the hassle of manual cleaning.

ThermoBatch™ Effluent Sterilization:

Capable of handling liquids and solids, PRI-Bio's ThermoBatch™ is one of the most versatile sterilization technologies on the market. It also does not require chemicals for sterilization, making it an environmentally conscious option. ThermoBatch™ (EDS) sterilizes biologically active wastewater in BSL-2 through BSL-4 research labs prior to discharge. The system provides "proof of process" documentation, ensuring that steps are being taken to protect public safety and the environment.

AutoFlow™ Effluent Sterilization:

Designed specifically for laboratory users, including research, virology, vaccine, GMO, CMO, forensic, hospitals, clinics, and isolation units. Design centralizes collection and treatment of liquid from different sources (sinks, showers, washers, process waters) from single-suite labs to large, multi-user facilities. Our newest option, the AutoFlow™ Sink offers sterilization in a compact plug-n-play footprint. Perfect for small laboratory or mobile laboratory environments.



Thermal Tissue Digesters™ (TTD)



Caustic Digesters Units™ (CDU)



AutoFlow™ & ThermoBatch™ Effluent Systems

Integrated Systems & Modular Process Solutions

Product Divisions

PRI operates as a contract manufacturer of modular processing systems for clients with existing designs and concepts. The company utilizes this segment of its business to explore emerging market opportunities and develop technical expertise supporting new technologies. The Company provides design consultation services as requested and manufactures in conformance to applicable standards such as ANSI, ASME, PED and other required standards, while control panels are fabricated in the Company's own UL certified panel shop.

PRI uses a complete turnkey project flow process for every job that we receive. Our engineering scope typically includes: 3-D modeling, general arrangement drawings, structural and piping detail drawings, ASME vessel drawings and calculations, junction box schematics and conduit layouts. Manufacturing responsibility included all piping, vessel and structural welding, painting and coatings, assembly, electrical, factory acceptance testing, and shipping preparations.

Integrated Systems Division Services Offered:

- Complete turnkey modular systems including quoting, design, engineering, fabrication, controls and field startup.
- Conceptual designs based on client's P&ID
- Conformity to client project specifications
- Project management
- Electrical engineering
- Mechanical engineering
- Fully enclosed, in-house fabrication





Progressive Recovery, Inc.

Distinguished Clients

3M
American Fujiseal
Anheuser-Busch
BEMIS
Boeing Company
Boston University Medical Center, UBIDL
Burns & McDonald
Catterpillar
Center for Disease Control - USA
Center for Disease Control - China
Colorado State University
Conoco Phillips
Cornell University
CVI WUR
Department of Defense (DoD)
Dow Corning
DuPont
Eastman Kodak
Emerson
Galveston National Labs, UTMB
GlaxoSmithKline, GSK
Haliburton
Harbin VRI - China
Hannover University (TiHo)
Hill Air Force Base
Homeland Security
INRA
InterVac / VIDO
Koch Modular Process Systems
Lonza
Lubrizol
Membrane Technology Research, Inc. (MTR)
Merck / MDS
National Bio and Agro-Defense Facility (NBAF)
National Institute of Health (NIH)
NIAID (Integrated Research)
NMBU Campus As Norway
North Carolina State University
Penn State University
Pfizer
PPG Industries
Resilience (DoD)
RJ Reynolds Tobacco Company
Rustoleum
Sherwin Williams
Sanofi
Saskatchewan Disease Control Laboratory
Sonoco Packaging
Southwest Foundation
Sun Chemical
Texas A&M
Thoikol
Tufts University
USDA
USGS
University of Guelph
University of Tennessee
URS Engineering Systems & Technologies
USAMRIID (U.S. Army Medical Research Institute for Infectious Diseases)

[Solvent Wash & Recovery](#) | [Biowaste Sterilization](#) | [Custom Process Skids](#) | [Service](#)

700 Industrial Drive, Dupo IL 62239, (618) 286-5000, www.prisystems.com

National Bio and Agro-Defense Facility (NBAF)

PRI Bio: Key Projects

World’s Largest Bio-Hazardous Waste Decontamination System (Effluent & Solids Treatment)

PRI Bio **provided** multiple bio-hazardous waste decontamination systems for the \$1.25 billion National Bio and Agro-Defense Facility, a DHS Science and Technology Directorate project **now owned and operated under USDA** located in Manhattan, Kansas.

Under the contract, PRI Bio **designed, fabricated and installed** numerous liquid decontamination systems, and several state-of-the-art 3rd Generation Tissue Autoclaves to sterilize solid biological waste streams.

The NBAF campus **includes** over 700,000 square feet of facility space, including the 574,000 square feet main lab building, which houses biosafety level (BSL) 2, 3 and 4 shared research space, constructed on the 48-acre site. The facility **has** advanced research, diagnostic testing and validation, countermeasure development (i.e., vaccines and anti-viral therapies) and diagnostic training for high-consequence livestock diseases. It also **provides** the necessary infrastructure to improve understanding and preparedness for potential bioterrorism employing foreign animal disease and zoonotic disease pathogens that may be accidentally or intentionally introduced in the United States and will develop capabilities to improve protection against such threats to our food supply, our nation’s agriculture economy, and public health.

Project Owner:	U.S. Government
Location:	Kansas, USA
Completion Date:	2021
Biosafety Level	BSL-4



USAMRIID (U.S. Army Medical Research Institute for Infectious Diseases)

PRI Bio: Key Projects

Thermal Batch Effluent Decontamination System

The USAMRIID Steam Sterilization Plant is currently the world's largest installed Effluent Sterilization System, incorporating **multiple cook tanks with heat recovery in a sequential batch configuration**. Capable of sterilizing >100,000 (GAL) per day, the system finalized start-up and commissioning in early 2012.

USAMRIID serves as the Department of Defense's (DoD) lead laboratory for medical biological defense research. The core mission is to protect warfighters from biological threats, and also investigate disease outbreaks and threats to public health. Research conducted at USAMRIID leads to medical solutions—therapeutics, vaccines, diagnostics, and information—that benefit both military personnel and civilians. USAMRIID is a subordinate laboratory of the U.S. Army Medical Research and Materiel Command.

USAMRIID's research, development, testing and evaluation efforts have resulted in the development of vaccines, currently in various stages of clinical trials, to protect against biological threats, including Anthrax, Botulism, Plague, Ebola, Hantavirus, Ricin toxin, and others.

Project Owner:	U.S. Government
Location:	Fort Detrick, MD
Completion Date:	2012
Biosafety Level:	BSL-3 and BSL-4



Central Vet Institute / Wageningen UR (WUR)

PRI Bio: Key Projects

48TTD - 500M - BS

PRI Bio was contracted to provide a Thermal Tissue Digester™ for the Veterinary institute to handle biologically hazardous waste.

The CVI-WUR system incorporated many custom configuration features due to client specification and building requirements. This system is seen below being lowered into the facility and down two floors. The unit is scheduled for start-up in early 2014.

Among other activities, CVI-WUR is prepared to handle Prion research. This unit is a Dry discharge system. The sterile effluent discharges below the bio-seal and will solidify into a sterile cake.

CVI-WUR collaborates with public and private partners to safeguard animal and public health. CVI contributes to the prevention, eradication and control of animal infectious diseases through research, diagnostics and consultancy.

Project Owner:	Central Veterinary Institute / WUR
----------------	------------------------------------

Location:	Netherlands
-----------	-------------

Completion Date:	2013
------------------	------

Biosafety Level	BSL-3AG
-----------------	---------



Nanotherapeutics, Inc.

PRI Bio: Key Projects

Continuous Flow Effluent Sterilization Systems

PRI Bio was contracted to provide six effluent sterilization systems to continually treat thousands of gallons of fluid per day.

The Nanotherapeutics facility was contracted by the Department of Defense to establish Medical Countermeasures Advanced Development and Manufacturing (MCM ADM) capability, dedicated to meet the needs of the DOD. The MCM ADM capabilities established by Nanotherapeutics will allow the DOD to more efficiently and expeditiously develop Medical Countermeasures (MCM) to protect and treat military populations against chemical, biological, radiological, and nuclear (CBRN) attacks and outbreaks of naturally occurring emerging and genetically engineered infectious diseases. The ultimate goal for the award is to reduce the overall time and cost associated with the development and manufacturing of Food and Drug Administration approved MCMs.

Headquartered in Alachua, FL, Nanotherapeutics will integrate into a new state-of-the-art facility flexible, single use, disposable equipment that can provide our military's national security requirements for MCM's now and for the foreseeable future.

Project Owner:	Nanotherapeutics, Inc.
Location:	Florida, USA
Completion Date:	2015
Biosafety Level	BSL-3



The PRI Team

For over 39 years, PRI has expanded into several markets, leading in each industry PRI has ventured. This leadership is the result of a quality staff working together from the beginning of a project through the start-up and commissioning phases. In order to achieve this harmony, PRI has built a solid foundation of quality engineers. PRI employs over 16 degreed engineers on staff, including both Electrical and Mechanical Engineers.

Our engineering department is housed in the same facility as manufacturing to permit the team to monitor the progress of a project and if questions arise from the shop floor, the in-house engineering team can respond to them immediately. CAD/CAM systems are in place to expedite production of components and all design is done on the latest releases of **Inventor** or **3-D Autocad**.

Having a complete team on staff is not only important for PRI, but also our clients. PRI's clients depend on PRI to support the A/E as well as their own staff from the early design stage through operation of the system.

The interface between shop manufacturing, in-house engineering and field start up teams continues to provide lessons learned and best practices for every project. This assures the team and client engineering is based on the most current discussion, situation or performance enchantments. The payoff is knowing that the client is receiving the highest quality system, and the most advanced engineered system available.



Mechanical Engineering

The PRI Team

The Mechanical Engineering department has more than 154 years combined experience in detailed mechanical design and pressure calculations for pressure equipment.

Software Used:

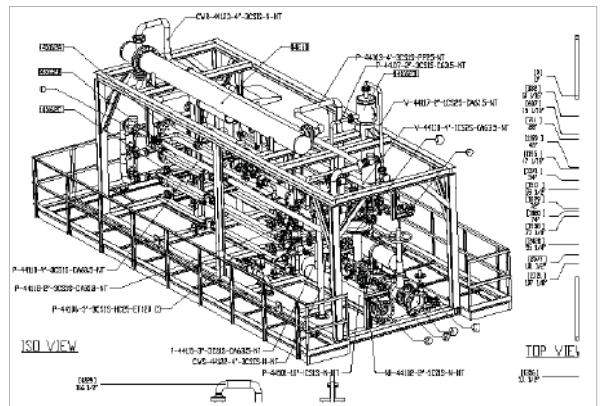
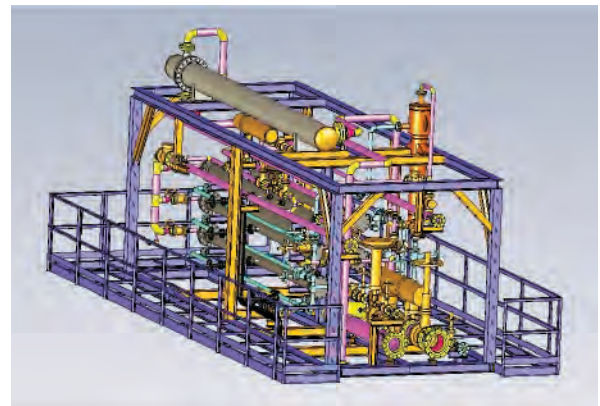
- Inventor
- AutoCAD
- CADWorx
- Navisworks
- DesignCalcs
- REVIT

Experience Includes:

- 3D Modeling
- Pressure Vessel Calculations
- Piping Isometrics
- Fabrication Detail Drawings
- P&ID Design
- Welding Details
- CNC Programming

Experience & Factory Training Includes:

- 39 year's experience in application engineering for process equipment
- Heat transfer fluids
- Solids Handling
- Lift Stations
- Valves & Instrumentation
- Pumps & Heat Exchangers
- Machining



Electrical Engineering

The PRI Team

The Electrical Engineering department, also established in 1983, has over 85 years combined experience in electrical design for industrial applications including three-phase power distribution, control circuits, PLC controls, Operator Interface Screens, controls, instrumentation and commissioning.

Electrical Engineering Concept/Design:

- Work closely with the customer, PRI sales, and mechanical engineering staff to provide a system that meets or exceeds all specifications.
- Assist in the selection of instrumentation, components and hardware necessary to complete the system design, including control/power components, wiring, conduit, and enclosures.
- Hands-on site for Factory Acceptance Tests, On-site Commissioning, Site Acceptance Tests, Operator/Maintenance Training, and Building Control System Interface

Design complete electrical control systems:

- PLC/HMI Programming and Control Circuit/Wiring Detail. Electrical Engineering drawings are included in Operator/Maintenance Manuals.
- Installation/Customer Interface Details:
- Show all necessary wiring and hardware required for installation and customer interface points.
- Wiring Details include panel layout, control wiring, power wiring, PLC I/O layout, and instrumentation details.
- Structure all programs to easily accommodate field modifications and future process requirements.
- Programs designed to be fail-safe – any broken wire or invalid sensor input will result in a system shutdown.
- Thoroughly test all program functions and system alarms before shipping.

Software Used:

- Rockwell - RSLogic
- Siemens - TIA Portal
- Inventor
- AutoCAD



Skilled In-Shop Crafts

The PRI Team

Our shop team members are highly skilled and take pride in their work. Our welding team has been extensively trained, and our machine operators have years of experience. The shop team includes the following areas of expertise:

Welders qualified per ASME Section VIII and AWS, with capabilities as qualified:

- Pipe Fitter, Welders
- Structural Fitter, Welders

Electricians

Machinists

Millwrights

Painter/Sandblaster

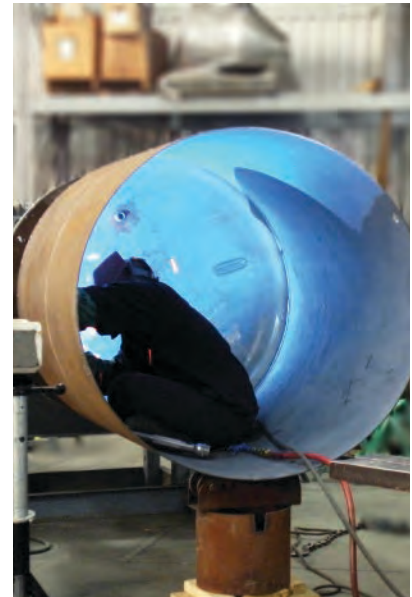
Quality Control Inspectors

- AWS Certified Inspector on staff

Plate-Forming Department

- Press Brake Operators
- Plate Roller Operators
- Plate Shear Operators
- Computerized Plasma/Oxyfuel Shape Cutter Operators

Inventory Control Specialists



In-House Fabrication Equipment

Cranes

4 P&H Overhead Cranes:

- 5 tons capacity each
- 10 tons lifting capacity per bay
- 20 ft. under hook

1 Yale Overhead X Crane 5 tons capacity

10 Abell-Howe Jib Cranes

- 1 ton capacity each
- 14 ft. long crane rail
- 14 ft. under hook

1 P&H Overhead Crane

- 30 tons capacity
- 30 ft. under hook

2 P & H Overhead Cranes

- 30 tons capacity each
- 60 tons lifting capacity per bay
- 35 ft. under hook with auxiliary 5 ton hook

Lifts

1 Genie GS-1930 Platform Lift

1 Z-30 Boom Lift

4 Komatsu Triple Stage Forklifts w/Propane Engines (4,000 lbs & 5,000 lbs capacity)

1 Kalmar 6,000 lbs capacity forklift



Shears & Rollers

In-House Fabrication Equipment

4 Weldwire tank turning rolls

- (2) 44,000 lb. capacity
- (2) 22,000 lb. capacity

1 Peck 36 inch x 20 gauge Sheet Metal Shear

1 Peck 36 inch x 20 gauge Sheet Metal Roll

1 Wysong Plate Shear

- 12 ft. capacity
- Computerized gauging system
- 3/8 inch capacity CS - 1/4 inch SS

1 Aronson Tank Turning Rolls

- 10,000 lb. capacity

1 SESCO Plate Roller

- 6 ft. wide x 5/16 inch thick to 18 inch ID
- Pasteurization-type tube rolling

1 Webb Plate Roller

- 12 ft. wide x 5/16 inch thick to 18 inch ID

1 Scotchman Iron Worker - 65 tons

- 1 inch hole in 3/4 inch plate max.



Brakes & CNC

In-House Fabrication Equipment

1 Chicago 8 ft. x 20 gauge Sheet Metal Brake

1 L-Tec CNC Shape Cutter (Plasma/Gas)

- 12 inch CS cutting capacity
- 1 inch SS cutting capacity
- 10 ft. x 20 ft. water table

1 Niagara Mechanical Press Brake

- 10 ft. bed
- 90 tons

1 Cincinnati Hydraulic Press Brake

- 14 ft. bed
- 230 tons
- 3/8 inch C/S - 90 @ 8 ft.

1 Cincinnati Hydraulic Press Brake

- 10 ft. bed
- 135 tons
- 1/4 inch C/S - 90 @ 5 ft.



Welding

In-House Fabrication Equipment

1 ESAB 1000 amp Submerged Arc Welder

- 14 ft. diameter capacity

6 Miller Syncrowave 350LX TIG Welders

- Water cooled
- 350 amp

1 Magnatech Orbital Tube and Pipe Welder

- Pipe Sizes 1 inch to 4 inch
- Carbon Steel, Stainless Steel & Other Alloys

1 L-Tec Digi Pulse 450 Welder

- MIG/stick/TIG
- Semi-auto
- 400 amp max.

1 Pandjiris Welding Positioner

- 48 inch turntable
- 3,000 lb. capacity

2 Aronson Welding Positioner

- 48 inch turntable - 4,500 lb. capacity
- 36 inch turntable - 2,500 lb. capacity

2 MBC Welding Positioners

- 12 inch turntable
- 200 lb. capacity

1 L-Tec Heliarc TIG Welder

- AC/DC
- 300 amp max.
- 300 amp max

1 Thermal Arc Plasma Torch

- Hand held cutting torch
- 1/4 inch S/S max.

5 Miller Dimension 452 MIG Welders

- 450 amps
- Dual feed

7 L-Tec V1-450 MIG Welders

- Semi-auto
- Dual wire feeders
- 400 amp max.



Milling

In-House Fabrication Equipment

1 Hypertherm Plasma Pipe Cutter

- 24 inch capacity

1 Trumph Plate Beveller

- 1 inch plate capacity

1 Giddings & Lewis Vertical Boring Mill

- 98 inch swing capacity

1 Giddings & Lewis CNC Horizontal Boring Bar

- 5 inch x 36 inch bar
- 72 inch x 108 inch travels

1 Carlton Radial Arm Drill

- 48 inch arm
- 11 inch column

2 Bridgeport Milling Machine

- (1) numerical read out

1 Cincinnati #5 Mill - 60 inch x 16 inch table

1 Cincinnati Super Service Drill

- 19 inch column x 72 inch arm

1 Six Station Delta Gang Drill

- 1/2 inch chuck capacity

1 Gap Bed Engine Lathe

- 21 inch swing, 60 inch bed

1 Gap Bed Engine Lathe

- 12 inch swing, 36 inch bed



Panel Shop

In-House Fabrication Equipment

Our panel-building experience ranges over more than 39 years, with at least 3,200 panels built in our dedicated facility. Because of the nature of our equipment, our panel shop has vast experience with various environments, from general to hazardous locations, both indoor and outdoor, and are able to meet requirements of many countries around the globe.

Panels are designed per the following certifications, where applicable:

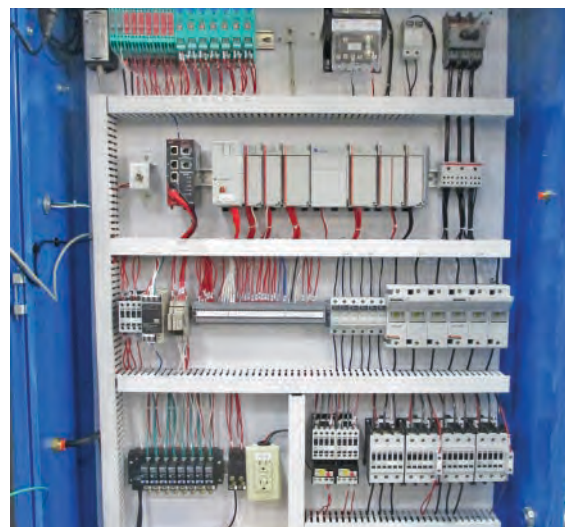
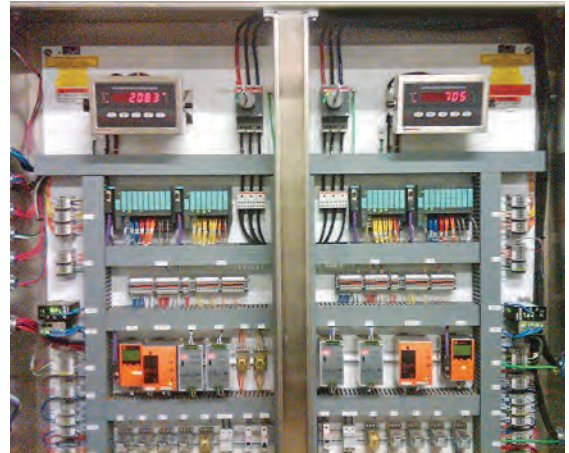
- NEC/IEC standards
- ATEX/CE certified
- UL/CSA certified

Panel Experience Includes:

- Explosion Proof
- Purged
- Intrinsically Safe
- General Classification

Control Platforms Supported:

- Allen-Bradley
- SIEMENS
- MODICON
- Omron
- GE
- Mitsubishi



Other Miscellaneous

In-House Fabrication Equipment

1 Binks Spray Booth

- 10 ft. wide x 10 ft. high door
- 26 ft. working depth (expandable)

1 Delta 20 inch Radial Arm Saw

1 Kaltenbach Cold Saw

- Miter table
- Length gauge
- 4 inch dia. Rounds

1 manual Series 8 Band Saw 20 inch capacity

1 Do-All Band Saw

- 10 inch x 12 inch capacity

1 Ultra-Matic Vibratory Finisher

- 36 inch dia. bowl capacity

1 Cemco Sand Blaster - 400# capacity

1 Gardner 50 HP Rotary Screw Compressor w/Refrigerated Air Dryer

1 Gardner 30 HP Rotary Screw Compressor w/Refrigerated Air Dryer

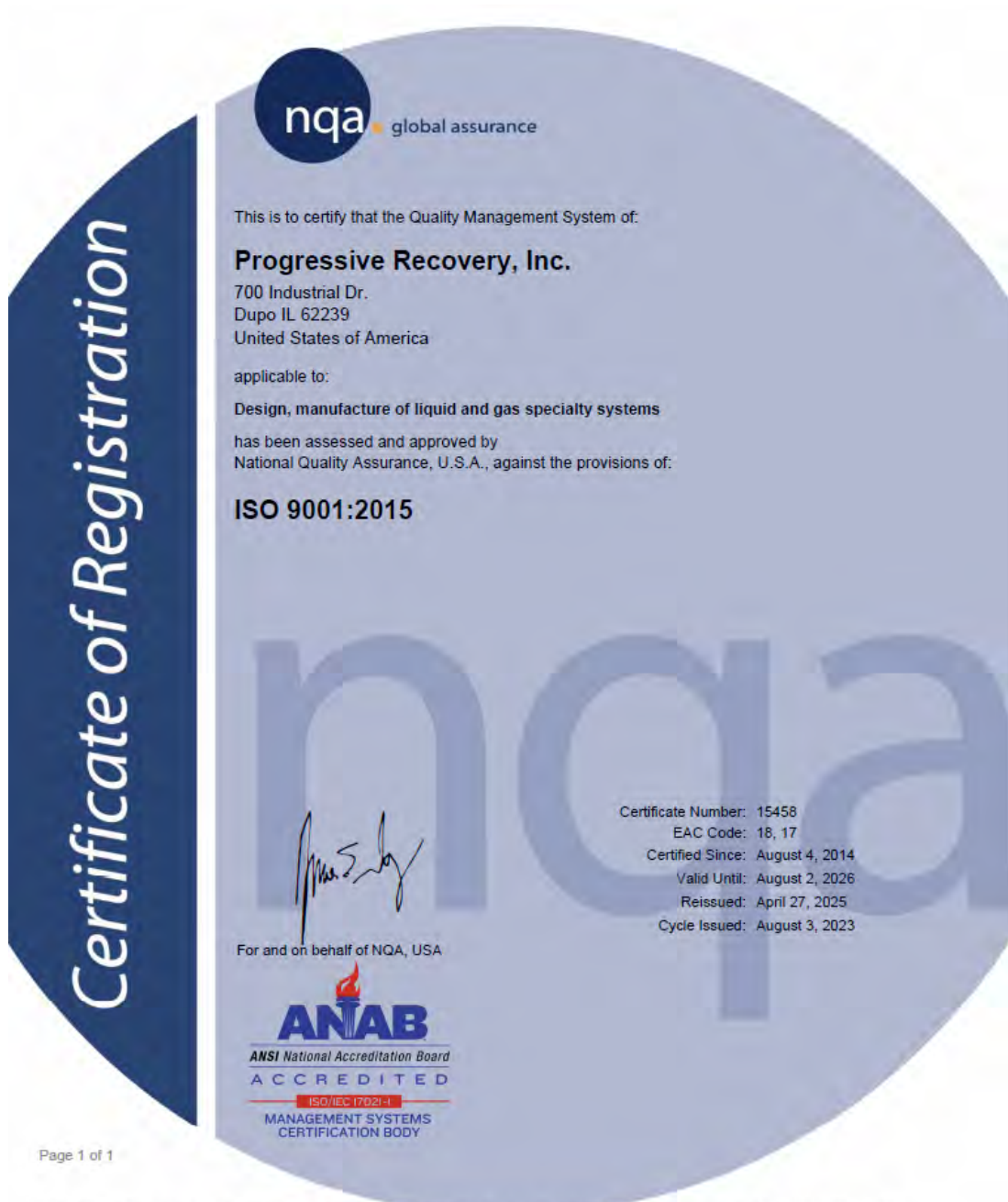
1 Hotsy Fuel Fired 3,000 psi Hot Water Pressure Washer

1 Hydraulic Press - 20 ton capacity

2 30 ton spreader bars



ISO 9001 Certification



Page 1 of 1

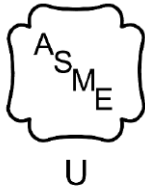
This approval is subject to the company maintaining its system to the required standard, which will be monitored by NQA, USA, 289 Great Road, Suite 105, Acton, MA 01720, an accredited organization under the ANSI National Accreditation Board.

Solvent Wash & Recovery | Biowaste Sterilization | Custom Process Skids | Service

700 Industrial Drive, Dupon IL 62239, (618) 286-5000, www.prisystems.com

ASME

Certification



The American Society of Mechanical Engineers

CERTIFICATE OF AUTHORIZATION

The named company is authorized by The American Society of Mechanical Engineers (ASME) for the scope of activity shown below in accordance with the applicable rules of the ASME Boiler and Pressure Vessel Code. The use of the ASME Single Certification Mark and the authority granted by this Certificate of Authorization are subject to the provisions of the agreement set forth in the application. Any construction stamped with the ASME Single Certification Mark shall have been built strictly in accordance with the provisions of the ASME Boiler and Pressure Vessel Code.

COMPANY:

Progressive Recovery, Inc.
700 Industrial Dr
Dupu, Illinois 62239
United States

SCOPE:

Manufacture of pressure vessels at the above location and field sites controlled by the above location (This authorization does not cover impregnated graphite)

AUTHORIZED: July 05, 2024

EXPIRES: July 05, 2027

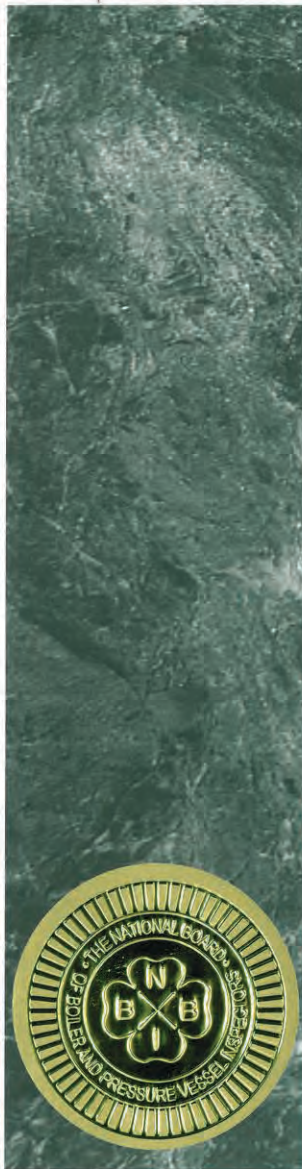
CERTIFICATE NUMBER: 23521

Gary L. Scribner
Board Chair,
Conformity Assessment



Matthew Vangway
Senior Director,
Engineering Operations

National Board of Pressure Vessel Inspectors Certification



**THE NATIONAL BOARD
OF
BOILER & PRESSURE VESSEL INSPECTORS**

*Certificate of Authorization
to Register*



This is to certify that

**Progressive Recovery, Inc.
700 Industrial Dr.
Dupo, IL 62239**

*is authorized to apply the "NB" mark and register
boilers, pressure vessels or other pressure retaining
items with the National Board.*

*The scope of Authorization is limited to items
manufactured in accordance with:*

ASME Designator(s): U

ISSUE DATE: June 25, 2015

*This Certificate of Authorization to Register will remain
in effect as long as the manufacturing organization holds
a valid Certificate of Authorization issued by the
American Society of Mechanical Engineers.*

Executive Director

Handwritten signature of the Executive Director.


NB 137 Rev. 9

PED/CE

Certification

Progressive Recovery, Inc. has procedures in place to manufacture equipment in accordance with the PED/CE directives and equipment provided will be PED labeled (Pressure Vessel Certification) and CE certified (Electrical and Other Safety). Upon starting the project, PRI will file an application for CE/PED on the system with:

Bureau Veritas Limited
 "Parklands"
 Winslow Road
 Didsbury, Manchester M20 2RE

Bureau Veritas UK Limited		Notified Body 0041	
 CERTIFICATE OF CONFORMITY Module G - Pressure Equipment Directive 97/23/EC N° CE-0041-PED-G-PRI-002-09-USA			
We hereby certify that the design, manufacture and testing of the below pressure equipment complies with the applicable Essential Safety Requirements of the Pressure Equipment Regulations 1999 (EC pressure Equipment Directive 97/23/EC).			
Manufacturer (name):	Progressive Recovery, Inc.		
Address:	700 Industrial Drive Dupo, Illinois 62239 UNITED STATES OF AMERICA		
EQUIPMENT			
Item:	2816		
Description:	Caustic Digester		
TESTS CARRIED OUT			
Final tests:	Reviewed Drawings, Calculations, PRA's, Stress Comparison per Appendix 1 para 7.1.2, Material Certificates, Witnessed Vessel Hydrostatic Pressure Test, Witnessed Piping Hydrostatic Pressure Test, Visual Examination, Final Internal and external examination, Dimension Control, Nameplate and Attachment, WPS, PQR, WPO's.		
Remarks - List of enclosures:			
INFORMATION			
Trading name of the manufacturer:	Same as the Name of Manufacturer		
Trading name of the authorized representative:	N/A		
Marking:	CE 0041 (BVIL notified body number)		
Nature and position of the affixing of the marking of this equipment:	CE Marking applied to stainless steel data plate welded to standoff welded to sidewall of vessel		
Year of manufacture:	2009		
Serial number:	2816		
Essential maximum/minimum allowable limits:			
- Maximum allowable pressure:	6.90 / -1.03 bar		
- Minimum/maximum allowable temperature:	Min -29 Max 171 degrees C		
© Bureau Veritas UK Limited BVIL 1686 rev 01		Contract No : 388/BSN/09 http://www.bureauveritas.com/ped	

Bureau Veritas UK Limited		Notified Body 0041	
 N° CE-0041-PED-G-PRI-002-09-USA			
FURTHER INFORMATION (where applicable)			
- Volume V of the pressure equipment (l):	1090 Liters		
- Nominal size for piping DN:	1.5", 2.0", 3.0"		
- Test pressure PT (equal (bar) and date):	12.41 bar 20 Nov 09		
- Safety device set pressure (bar):	6.90 bar		
- Output of the pressure equipment (kW):	N/A		
- Supply voltage (volts):	380 V		
- Intended use:	Effluent Decontamination System		
- Filling ratio (kg/l):	N/A		
- Maximum filling mass (kg):	1088 kg		
- Tare mass (kg):	1093 kg		
- Product group:	Group 2		
- Other information:	Drawing # 0003226 Rev 5		
Made at	On (MM/DD/YYYY)	Approved and Recorded at	Signed by
Manchester, UK	12/28/2008	UK	Patrick Hennessy
Code of Registration / Registration code: 201038.17.0069.P/UK			
*The certificate is subject to the terms of Bureau Veritas General Conditions of Service attached to the agreement signed by the customer.			
© Bureau Veritas UK Limited BVIL 1686 rev 01		Contract No : 388/BSN/09 http://www.bureauveritas.com/ped	

SELO
Certification



UL Controls & UL-142

Certification



Progressive Recovery, Inc.

Is a Qualified Manufacturer of



Listed Control Panels

For the following UL file numbers

Control Panels and Assemblies for Use in Hazardous Locations	NNNY.E180510
Control Panels and Assemblies for Use in Hazardous Locations Certified for Canada	NNNY7.E180510
Industrial Control Panels	NITW.E113665
Industrial Control Panels Certified for Canada	NITW7.E113665
Industrial Control Panels Relating to Hazardous Locations	NRBX.E199174
Industrial Control Panels Relating to Hazardous Locations Certified for Canada	NRBX7.E199174

CERTIFICATE OF COMPLIANCE

Certificate Number 20130712-MH49729
Report Reference MH49729-20130712
Issue Date 2013-JULY-12

Issued to: PROGRESSIVE RECOVERY INC
 700 INDUSTRIAL PARK
 DUPO IL 62239

This is to certify that representative samples of ABOVEGROUND FLAMMABLE-LIQUID TANKS
 Aboveground tanks for flammable and combustible liquids and secondary containment aboveground tanks for flammable and combustible liquids.

Have been investigated by UL in accordance with the Standard(s) indicated on this Certificate.

Standard(s) for Safety: UL142, Standard for Steel Aboveground Tanks for Flammable and Combustible Liquids

Additional Information: See the UL Online Certifications Directory at www.ul.com/database for additional information

Only those products bearing the UL Listing Mark should be considered as being covered by UL's Listing and Follow-Up Service.

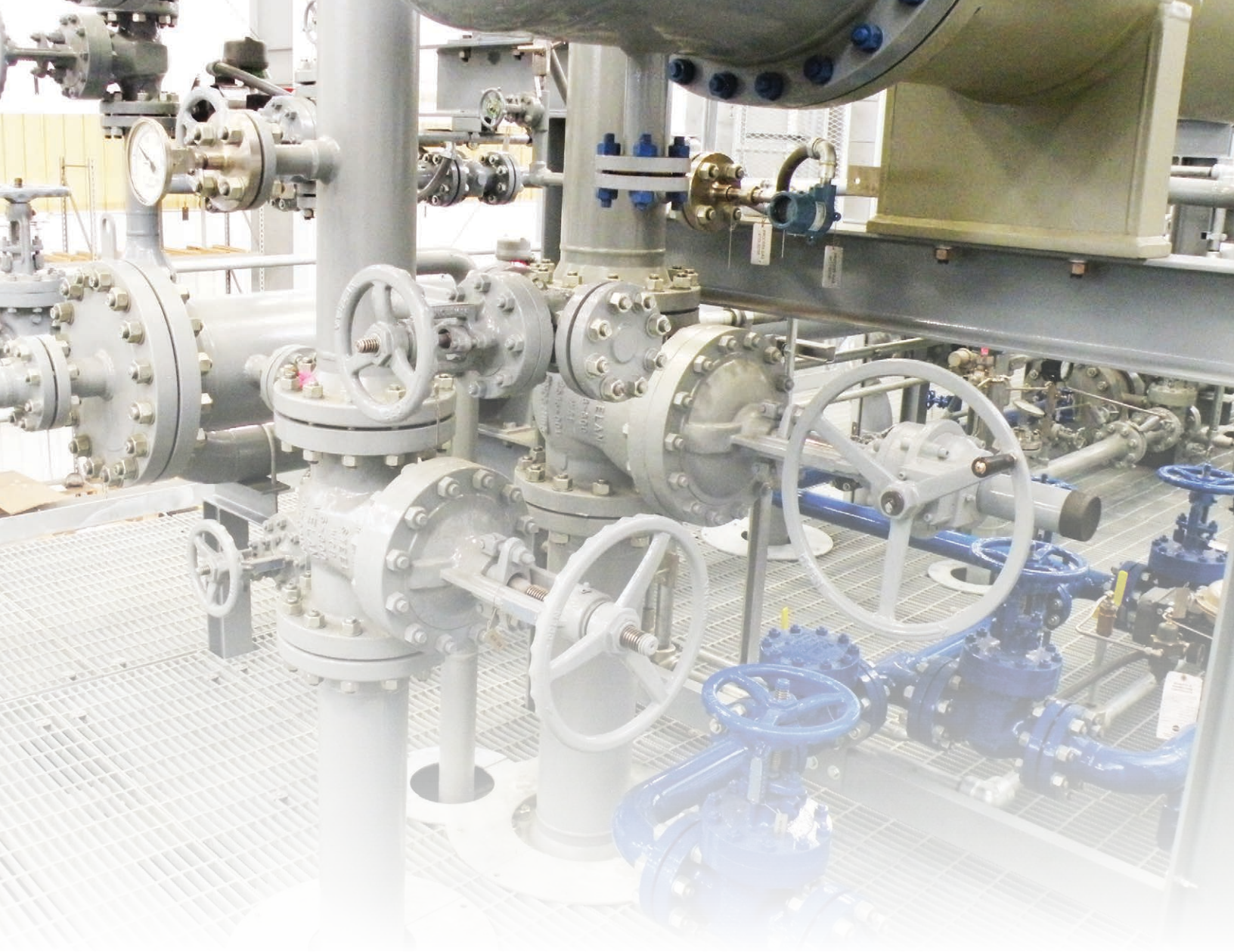
The UL Listing Mark generally includes the following elements: the symbol UL in a circle with the word 'LISTED'; a control number (may be alphanumeric) assigned by UL; and the product category name (product identifier) as indicated in the appropriate UL Directory.

Look for the UL Listing Mark on the product.

William R. Carney
 William R. Carney, Director, North American Certification Programs
 UL LLC

Any information and documentation involving UL, Mark schemes are provided on behalf of UL LLC (UL) or any authorized licensee of UL. For questions, please contact a local UL Customer Service Representative at local@ul.com.





PRI

Solvent Wash & Recovery | Biowaste Sterilization | Custom Process Skids | Service

700 Industrial Drive, Dupu IL 62239, (618) 286-5000, www.prisystems.com